

## AIT02ZPFC-01NL

720 Watts

### Data Sheet

**Total Power:** 720 Watts  
**Input Voltage:** 85 - 264 Vac  
**# of Outputs:** Single

### SPECIAL FEATURES

- Unity power factor
- High efficiency - up to 93%
- Universal input voltage and frequency range
- Up to 720 W output power
- Negative enable function
- RTCA-D0 160 compliant
- IEC1000-3-2 compliance at 50 Hz and 800 Hz input
- 100 °C baseplate operating temperature
- Enable output to control DC-DC Converter
- Internal active switch bypassing external inrush current components

### SAFETY

- UL cUL 60950 Recognized
- TUV EN60950 Licensed



### Electrical Specifications

Input	
Input range	85 - 264 VAC (Configurable)
Input Surge	290 VAC / 500 ms
Input Frequency	50/60 Hz / 360-800 Hz
Efficiency <sup>2</sup>	93% @ 230 VAC, 720 W (Typical)
Total Harmonic Distortion	Less than 10%
Power Factor	0.99 typical (115 Vac; 50 Hz to 360 Hz; 320 W); 0.99 typical (230 Vac; 720 W); 0.98 typical (115 Vac; 800Hz; 320 W)
Control	
LD Enable	Direct drive output to opto-isolator
PFC Enable	Neg TTL compatible
Voltage Adjust	79% to 100% V <sub>o</sub>
Output	
Output voltage	393 V typical (I <sub>o</sub> = 1.83 A / V <sub>i</sub> > 180 Vac) 393 V typical (I <sub>o</sub> =0.1A)
Oversoltage Protection	430 max
Power Limit for AC input	V <sub>in</sub> = 100 Vac, P <sub>max</sub> = 320 W V <sub>in</sub> = 230 Vac, P <sub>max</sub> = 720 W V <sub>in</sub> = 85 Vac, P <sub>max</sub> = 320 W
Isolation	
I/O isolation	None
Input to base-plate	2700 Vdc
Output to base-plate	2700 Vdc
Leakage current	< 3 mA at 800 Hz input frequency

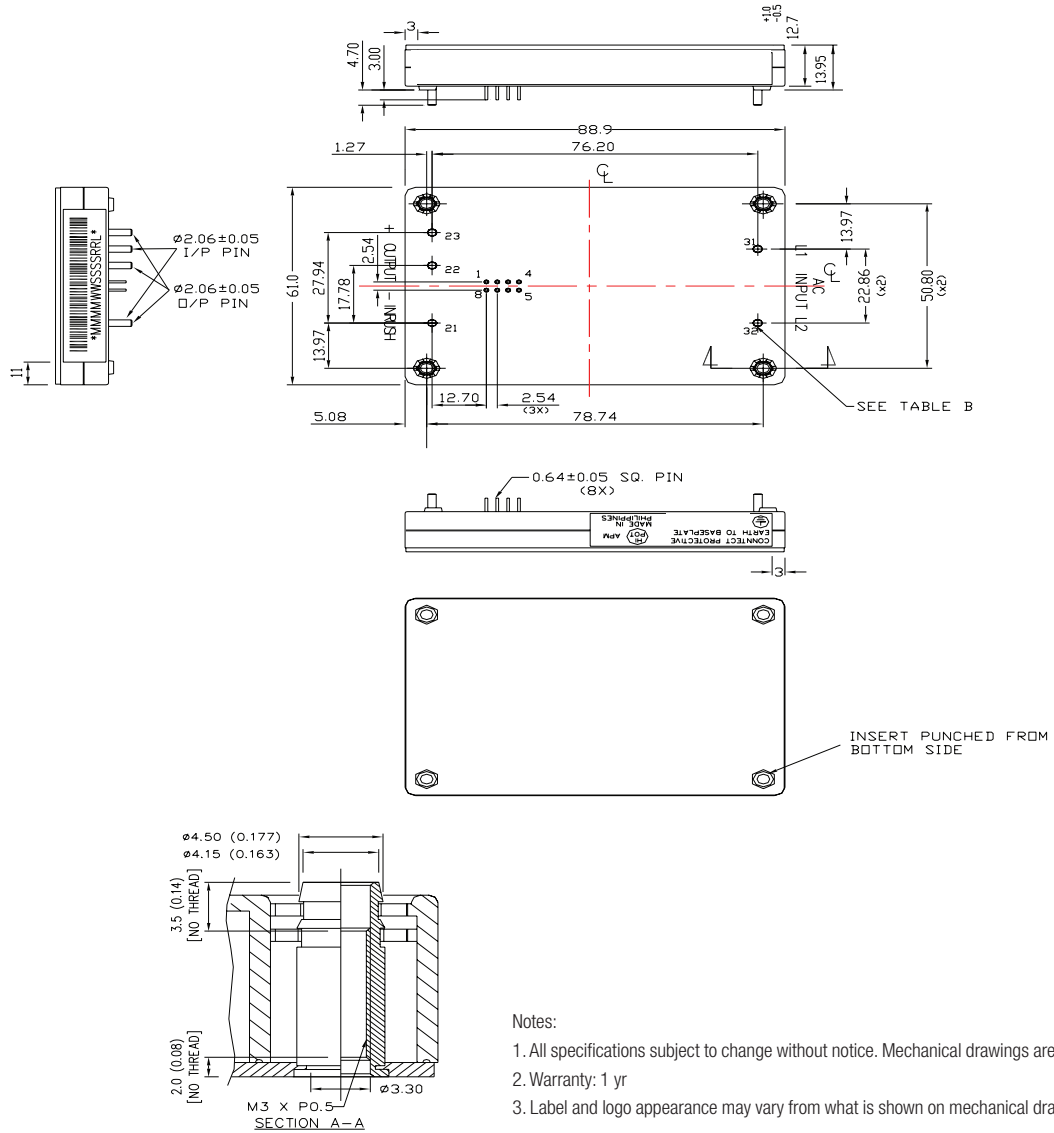
### Environmental Specifications

Operating ambient temperature range	-20 °C to +100 °C (baseplate temperature)
Startup temperature	-40 °C to +100 °C (baseplate temperature)
Storage temperature	-40 °C to 120 °C
Overtemperature protection	120 °C Max
Calculated MTBF	> 1 million hours

Ordering Information

Model number	Description	Notes
AIT02ZPFC-01NL	720 W Low Profile PFC Module	Negative Enabled

Mechanical Drawings



- Notes:
1. All specifications subject to change without notice. Mechanical drawings are for reference only.
  2. Warranty: 1 yr
  3. Label and logo appearance may vary from what is shown on mechanical drawings.

WORLDWIDE OFFICES

Americas

2900 South Diablo Way  
Suite B100  
Tempe, AZ 85282, USA  
+1 888 412 7832

Europe (UK)

Ground Floor Offices, Barbary House  
4 Harbour Buildings, Waterfront West  
Brierley Hill, West Midlands  
DY5 1LN, UK  
+44 (0) 1384 842 211

Asia (HK)

14/F, Lu Plaza  
2 Wing Yip Street  
Kwun Tong, Kowloon  
Hong Kong  
+852 2176 3333



www.artesyn.com

Artesyn Embedded Technologies, Artesyn Embedded Power, Artesyn, and all Artesyn related logos are trademarks and service marks of Artesyn Embedded Technologies, Inc. All other names and logos referred to are trade names, trademarks, or registered trademarks of their respective owners. Specifications are subject to change without notice. © 2019 Artesyn Embedded Technologies, Inc. All rights reserved. For full legal terms and conditions, please visit [www.artesyn.com/legal](http://www.artesyn.com/legal).

For more information: [www.artesyn.com](http://www.artesyn.com)  
For support: [productsupport.ep@artesyn.com](mailto:productsupport.ep@artesyn.com)